

# eXtreme 32



ASTM E84

NFPA 701

UL 2218 (Class: 4)

**Multiknit**<sup>®</sup>  
**INTERNATIONAL**





# eXtreme 32

Brought to you by



CHOOSE FROM A VARIETY OF DIFFERENT COLOURS  
OUR SHADE NET INCORPORATES A KNITTED LOCK STITCH  
WITH A MONOFILAMENT AND TWO TYPE YARNS FOR  
DEMINSIONAL STABILITY, TEAR AND FRAY RESISTANCE  
Our PATTERN GIVES EXCELLENT WEFT AND WARP STABILITY  
These fabrics are used for large tension structures, carports, shade sails etc  
PROUDLY MANUFACTURED IN SOUTH AFICA





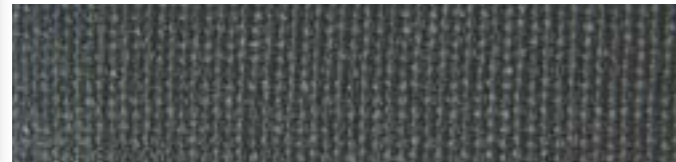
Arizona

SWATCH IMAGE TO BE UPDATED

Black



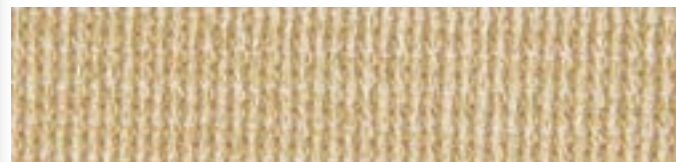
Charcoal



Cinnamon



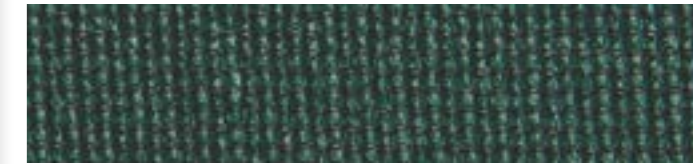
Desert Sand



Navy Blue



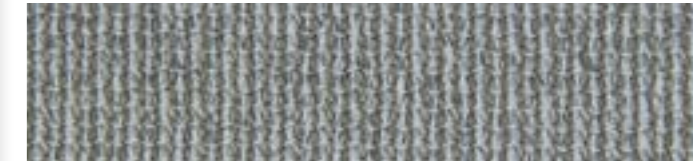
Rain Forest Green



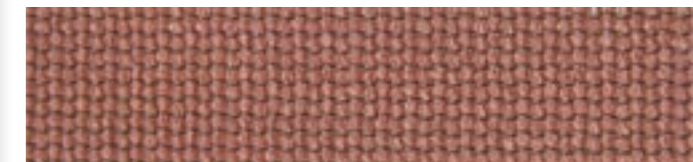
Royal Blue



Silver



Terracotta







Atomic Orange



Bleached Slate



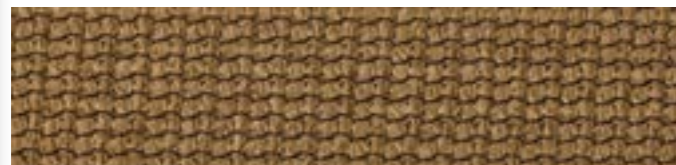
Bush Khaki

SWATCH IMAGE TO BE UPDATED

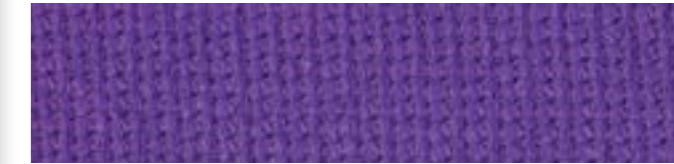
Chocolate

SWATCH IMAGE TO BE UPDATED

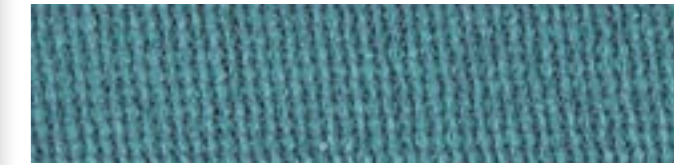
Craft Work



Electric Purple



Laguna Blue



Mulberry



Olive



Red





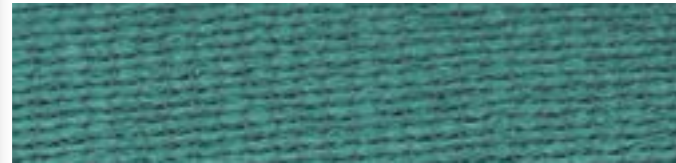
Rust Gold

SWATCH IMAGE TO BE UPDATED

Sunflower Yellow

SWATCH IMAGE TO BE UPDATED

Turquoise



White



Zesty Lime



eXtreme 32 Standard Range	SHADE FACTOR %	UV BLOCK OUT %
Arizona	-	-
Black	95	96
Charcoal	94	96
Cinnamon	89	92
Desert Sand	91	92
Navy Blue	94	95
Rain Forest Green	90	92
Royal Blue	86	92
Silver	91	92
Terracotta	93	93

eXtreme 32 Non-Standard Range	SHADE FACTOR %	UV BLOCK OUT %
Atomic Orange	-	-
Bleached Slate	83	97
Bush Khaki	-	-
Chocolate	-	-
Craft Work	92	96
Electric Purple	89	92
Laguna Blue	90	91
Mulberry	89	84
Olive	88	92
Red	90	95
Rust Gold	-	-
Sunflower Yellow	80	94
Turquoise	92	85
White	58	88
Zesty lime	85	91

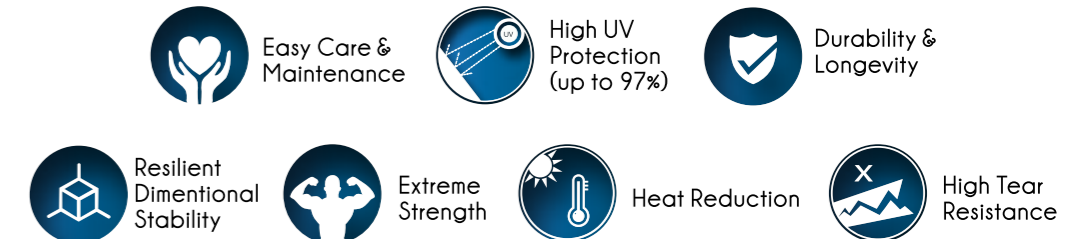
## TECHNICAL FEATURES

- eXtreme 32 is a three bar knitted, lockstitch pattern, incorporating monofilament and type yarns for dimensional stability, tear and fray resistance.
- Our pattern gives excellent weft and warp stability, due to throw of the weft yarns across the knitting needles during fabrication of the fabric.
- The pattern design achieves high density coverage with the weft yarns, giving up to 97% UV block out.
- The eXtreme 32 fabric is heat set using a stentering process, giving additional dimensional stability and strength as a result of shrinking and equalizing the yarns lengths and knots in a three bar lockstitch pattern.
- The stentering of the eXtreme 32 fabric assists in eliminating sagging and looseness in the fabric after installation.

Manufactured by:



Available in:  
- 33m rolls and cut lengths  
- Standard width: 3m (folded to 1.5m)



# **Multiknit**<sup>®</sup> **INTERNATIONAL**

---

**Manufacturers of Knitted Agricultural  
and Decorative Shade Net Fabrics**



[www.multiknit.com](http://www.multiknit.com)

Tel: +27 (0)13 7512376

Email: [exports@multiknit.co.za](mailto:exports@multiknit.co.za)

[exports1@multiknit.co.za](mailto:exports1@multiknit.co.za)